

Introduction for New Users

Wing IDE Professional

Wingware
www.wingware.com

Version 2.1.4
February 9, 2007

[Wing IDE](#) is a powerful software development environment for Python. Wing cuts down on coding and debugging time, so you can build quality code more rapidly.

- For a guided tour **try the tutorial**.
- To try Wing on your own, see the **quick start guide**.
- Wing IDE 1.1 users may want to **learn about migrating to Wing IDE 2.x**.
- Also available: **Why Use Wing IDE?**

Contents

Wing IDE Tutorial

- 1.1. Tutorial: Getting Started
- 1.2. Tutorial: Getting Around Wing IDE
 - Configuration Options
- 1.3. Tutorial: Check your Python Integration
- 1.4. Tutorial: Set Up a Project
 - Browsing Files
 - Configuring PYTHONPATH
 - Shared Project Files
- 1.5. Tutorial: Auto-completer and Source Assistant
- 1.6. Tutorial: Debugging
 - 1.6.1. Tutorial: Debug I/O
 - 1.6.2. Tutorial: Debug Process Exception Reporting
 - Avoiding False Positives
 - 1.6.3. Tutorial: Command Line Power Debugging
 - 1.6.4. Tutorial: Watching Debug Data
 - Tracking Values
 - Watching Expressions
 - 1.6.5. Tutorial: Other Debugger Features
- 1.7. Tutorial: Source Browser

1.8. Tutorial: Searching

Toolbar Search

Keyboard-driven Search

Search Tool

Replacing

Wildcard Searching

Regular Expression Search

Search in Files Tool

File Sets

Searching Disk

Multi-File Replace

1.9. Tutorial: Source Assistant with Classes

1.10. Tutorial: Other IDE Features

1.11. Tutorial: Further Reading

Migrating from Wing IDE 1.x

Why Use Wing IDE?

Copyright (c) 1999-2006 by Wingware. All rights reserved.:

Wingware

P.O. Box 1937

Brookline, MA 02446

United States of America

Wing IDE Tutorial

This document introduces Wing IDE by taking you through its feature set with a small coding example. For a faster but less informative introduction, see the **Wing IDE Quick Start Guide**.

To get started, press the **Next** icon, second from right in the toolbar immediately above this page.

1.1. Tutorial: Getting Started

In addition to installing Wing IDE, you will also need to install Python. This tutorial will work with Python version 2.0 or later.

To get Python, download it now from python.org or wingware.com.

If the above links don't work or bring up the wrong browser, you may need to define the **BROWSER** environment variable to the name of the browser executable you wish to use (for example: `mozilla`) and restart Wing IDE.

On Linux/Unix, you can also add a browser command line to your **URL Display Commands** preference. This is recommended only if your preferred browser doesn't work when specified with the **BROWSER** environment variable. Setting **BROWSER** will generally do a better job reusing browser instances and creating and raising browser windows as needed.

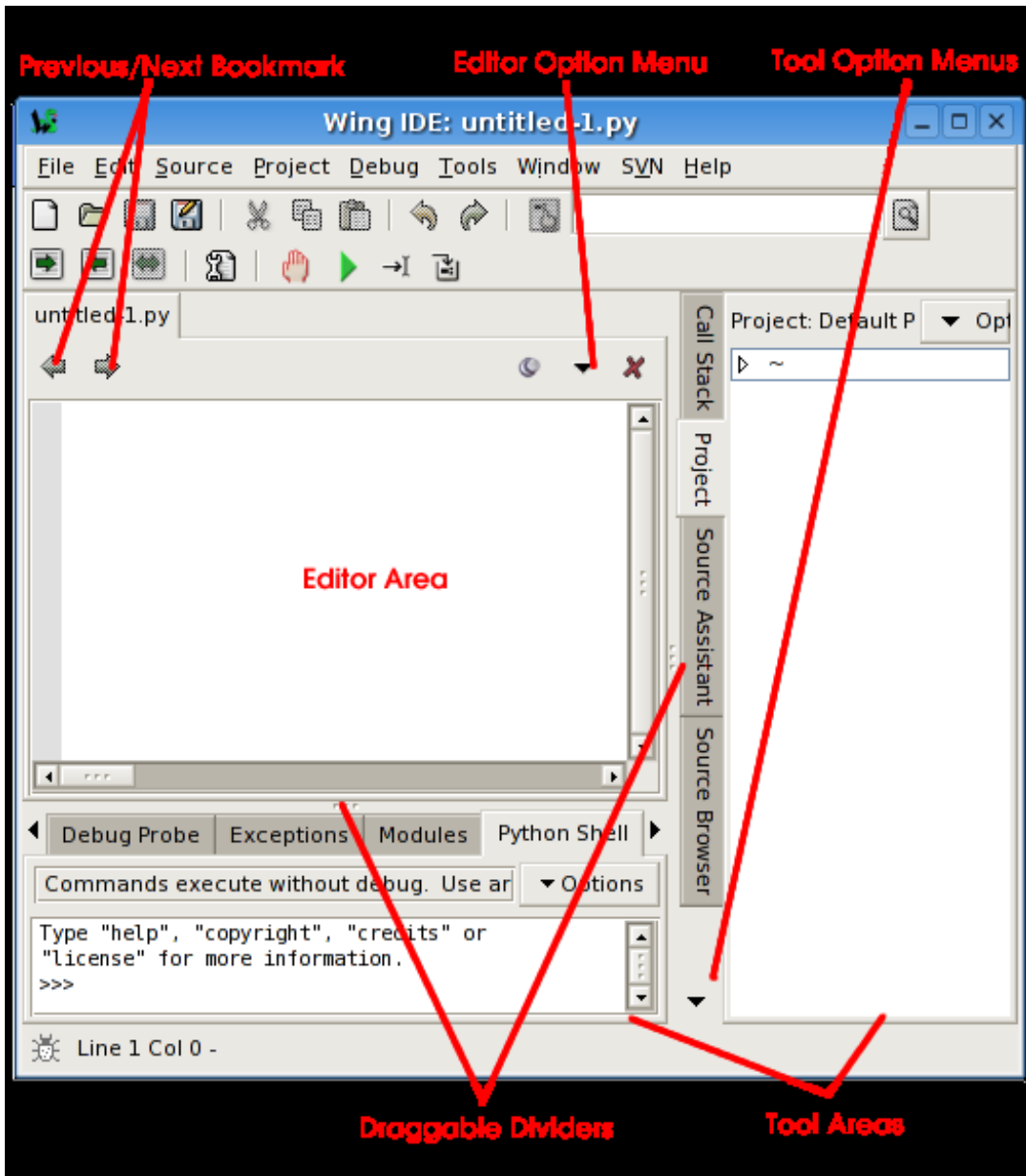
Next, copy the entire `tutorial` directory out of your Wing IDE installation to a location where you will have write access to the files in it. You can do this manually or use the following link to execute a script that will prompt you for a target directory to copy the tutorial info: **Copy Tutorial Now**

We welcome feedback and bug reports, both of which can be submitted directly from Wing IDE using the `Submit Feedback` and `Submit Bug Report` items in the `Help` menu, or by emailing us at [support at wingware.com](mailto:support@wingware.com).

1.2. Tutorial: Getting Around Wing IDE

Let's start with some basics that will help you get around Wing IDE while working with this tutorial.

Wing IDE's user interface is divided into an editor area and two tool boxes separated by draggable dividers. Use the option menus in each area to create splits or move tools around. The `Previous/Next Bookmark` buttons and the `Next Document`, `Previous Document` and `Most Recent Document` items in the `Window` menu can be used to switch quickly between documents in the editor area, such as this tutorial and the source files you'll be working with later.



Configuration Options

There are many configuration options available for customizing the user interface. Some of these are described below. Once you make changes to any of these, your settings will be remembered in your project file and preferences.

Splitting Panels -- The editor area and tool boxes can be split into multiple sub-panels

by using the editor and tool box option menus. These can be accessed either by clicking on the dropdown icon or by right-clicking on the notebook tabs. Note that when splitting the editor area, each new split will show the same files as all others; this allows for editing multiple parts of the same file.

I Splitting your editor area or creating a separate **Help** tool window may make it much easier to get around this tutorial.

The number of splits shown by default in tool boxes will vary depending on the size of your monitor.

Minimizing Tool Boxes -- By clicking on an already-active tool tab in one of the tool boxes, the entire area will be minimized down so that only the tabs for the area are visible. Clicking again on any tab will restore the tool box to its previous size. Or, use F1 and F2 to toggle the state of the two tool boxes. This is a convenient way to increase space available to the editor or other tool box.

Shift-F2 can also be used to maximize the editor area temporarily, hiding the tools and toolbar until Shift-F2 is pressed again.

Moving and Adding Tools -- Tools can be moved among the tool boxes or out to separate windows by using the tool box option menu. Additional instances of any tool can be created from the tool box option menu or in a separate window from the **Window** menu.

Adding Document Windows -- Additional document windows can also be created from the **Window** menu. Each separate document window contains its own set of open files.

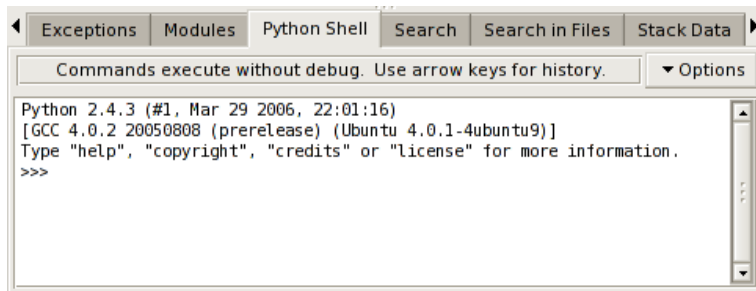
Editor Personality -- If you are used to another editor such as Visual Studio, VI or Vim, Emacs, or Brief, you may want to put Wing into a more familiar keyboard mode using the **Personality** preference. Be sure to click **OK** or **Apply** so the changes take effect.

Other Options -- **Source Code Font/Size** and **Display Font/Size** can be altered. The toolbar's appearance can be changed using the **Toolbar Size** and **Toolbar Style** preferences. The tool boxes can be moved from **right to left** or **bottom to top**. The editor option menu allows selecting between using notebook tabs or a popup menu to navigate between open editors.

For more information on adjusting the user interface to your needs, see the **Customization** chapter of the manual.

1.3. Tutorial: Check your Python Integration

Before starting with some code, let's make sure that Wing has succeeded in finding your Python installation (the latest version is preferred if you have multiple versions installed). To check this, bring up the **Python Shell** tool. After a moment, it should show you the Python command prompt like this:

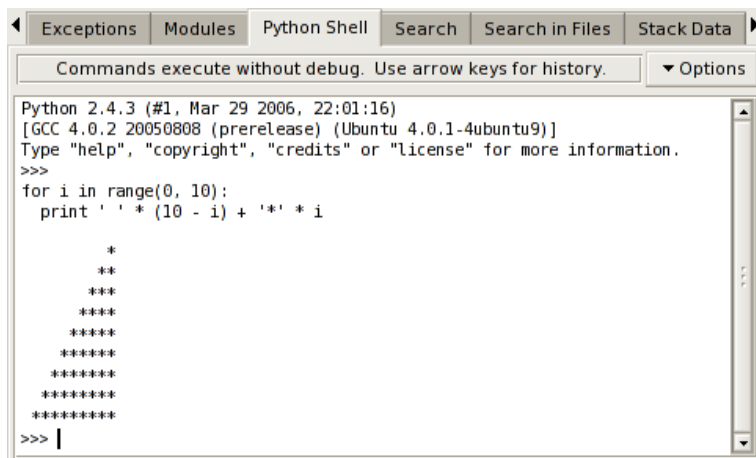


If this is not working, or the wrong version of Python is being used, you can point Wing in the right direction with the **Python Executable** setting in **Project Properties**, available from the toolbar and Project menu. You will need to **Restart Shell** from **Options** in the Python Shell tool after altering this property.

Once the shell works, copy/paste or drag and drop these lines of Python code into it:

```
for i in range(0, 10):
    print ' ' * (10 - i) + '*' * i
```

This should print a triangle as follows:



Notice that the shell removes common leading white space when blocks of code are copied into it. This is useful when trying out code from source files.

You can create as many instances of the Python Shell tool as you wish; each one runs in its own private process space that is kept totally separate from Wing IDE and your debug process.

1.4. Tutorial: Set Up a Project

Now we're ready to get started with some coding. The first step in working with Wing IDE is to set up a project file so that Wing can find and analyze your source code and store your work across sessions.

Wing starts up initially with the Default Project. To create a new project separate from the Default Project, select **New Project** from the **Project** menu now.

Next, add your source files to the project. You can do this with the **Add** items in the **Project** menu, or by right clicking on the **Project** tool. For the purposes of this tutorial, use **Add Directory Tree** to add all files in your copy of the `tutorials` directory.

Once your files have been added, save the project to disk from the **Project** menu. Use `tutorial.wpr` as the project file name and place it in your `tutorials` directory.

Browsing Files

Files in your project can be opened by double clicking or right-clicking on the file list. When the **Follow Selection** item in the **Options** menu at top right is checked, Wing will also display the source code for files that are single clicked. However, these files are opened “non-sticky” so that they are automatically closed again when another file is brought up. This is indicated with the stick pin icon in the top right of the editor area:



-- Indicates the file is opened permanently until it is closed explicitly by the user.



-- Indicates that the file is opened transiently and will auto-close except if it is edited.

Clicking on the pin icon toggles between the modes as long as the file doesn't contain unsaved edits. Right-clicking on the icon displays a menu of recently visited files. Note

that this contains both transient and non-transient files, while the **Recent** list in the **File** menu contains only non-transient files.

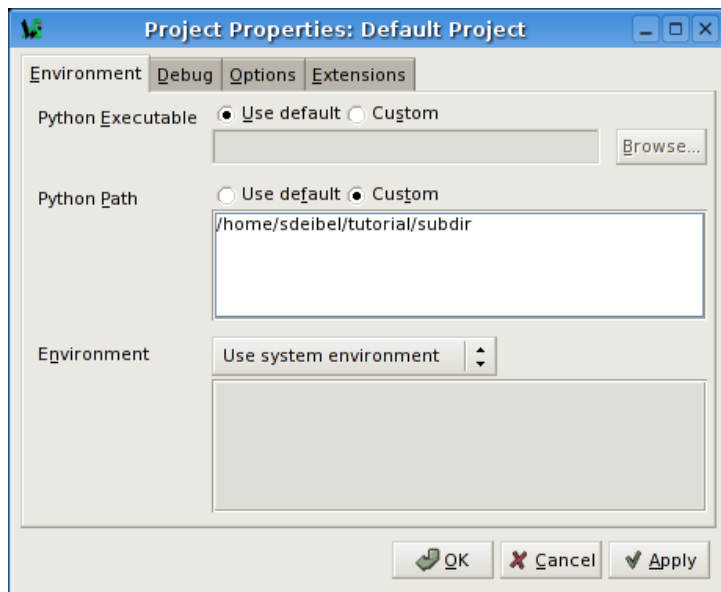
The number of transient editors to keep open, in addition to those that are visible is set with the **Transient Threshold** preference.

This mechanism helps to prevent huge numbers of files being opened when stepping in the debugger or using the source browser, search manager, and other tools to browse files.

Note that you can alter the project display to sort files into a deep hierarchy, a flattened hierarchy, or by mime type. These are available from the **Options** menu in the project view.

Configuring PYTHONPATH

Whenever your Python source depends on `PYTHONPATH` (either set externally or by altering `sys.path` internally), you will also need to tell Wing about your path. This value can be entered from the **Project Properties** dialog, which is accessible from the **Project** menu and the toolbar.



For this tutorial, you will at least need a `PYTHONPATH` that includes the `subdir` sub-directory of your `tutorials` directory as shown in the figure above. This contains a module used as part of the first coding example.

Note that the `PYTHONPATH` is set up with the full path to the directory `subdir`. This is strongly recommended because it avoids potential problems finding source code when the starting directory is ambiguous, both for source code analysis purposes and in Wing's debugger. A partial path can be specified but Wing will issue a warning explaining why this is a bad idea.

The configuration is used here for illustration purposes. You could easily run the example code without a `PYTHONPATH` by moving the `path_example.py` file to the same location as the example scripts, or by placing it into your Python installation's site-packages directory. Either of these allows Python to find the modules without altered `PYTHONPATH`.

Shared Project Files

If you plan to use Wing IDE in a development team that shares project files in a revision control system such as `CVS`, `Subversion`, or `Perforce SCM`, be sure to change your project to **Shared** using the **Project Type** property. This separates the project into two files: `*.wpr` with shared project data and `*.wpu` with user-specific data. Check only the `*.wpr` file into revision control to avoid revision conflicts resulting from concurrent edits.

1.5. Tutorial: Auto-completer and Source Assistant

By now Wing will have found and analysed the tutorial examples, and all the modules that are imported and used by them. This analysis process runs in the background and allows Wing to present you with better support during inspection and editing of code. With larger code bases, you may notice the CPU load from this process, but with this tutorial the analysis will happen instantaneously after the project has been configured.

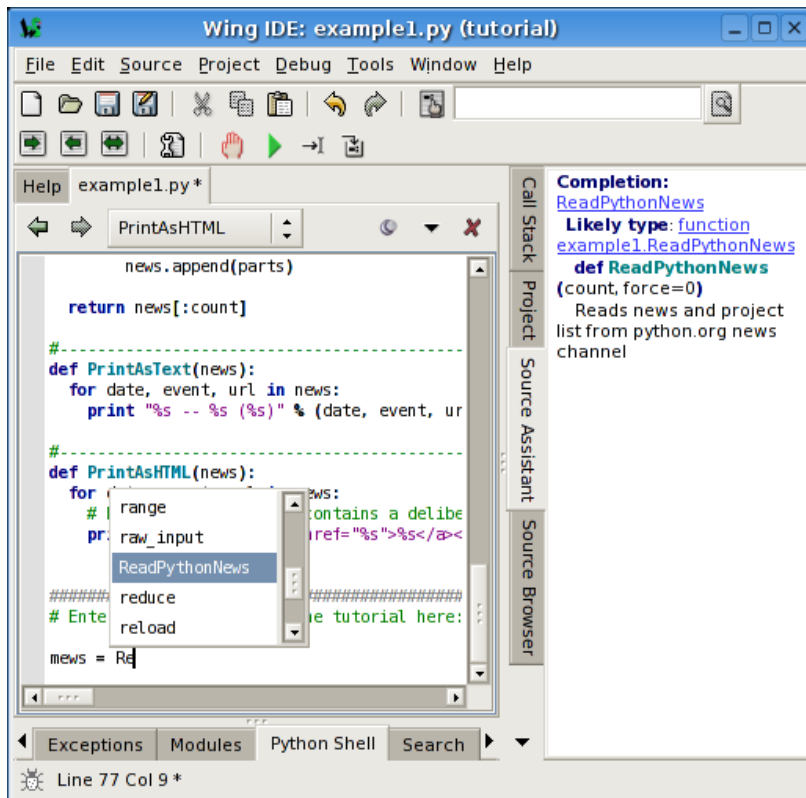
The editor's auto-completer and Source Assistant are two of the most important analysis-driven tools in Wing IDE.

To try these out, double click or right-click on the file `example1.py` in the project panel. Also bring the **Source Assistant** tool to front. This is where Wing IDE shows documentation, call signature, and other information as you move around your source code or work within other tools, so it's a good idea to keep it visible while editing.

Scroll down to the bottom of `example1.py` and enter the following code by typing (not pasting) it into the file:

```
news = Re
```

Notice that Wing shows you a popup menu of completion options as you type. You can press tab to enter the currently selected value, or scroll around in the list with the arrow keys. When you typed “news” this completer wasn’t helpful because you had not yet defined `news` as a symbol in your source. However, once you move on to type “ = Re“, Wing will display another completion list with `ReadPythonNews` highlighted. Notice that the Source Assistant updates to show call information for that function, or for whatever value is selected in the auto-completer:



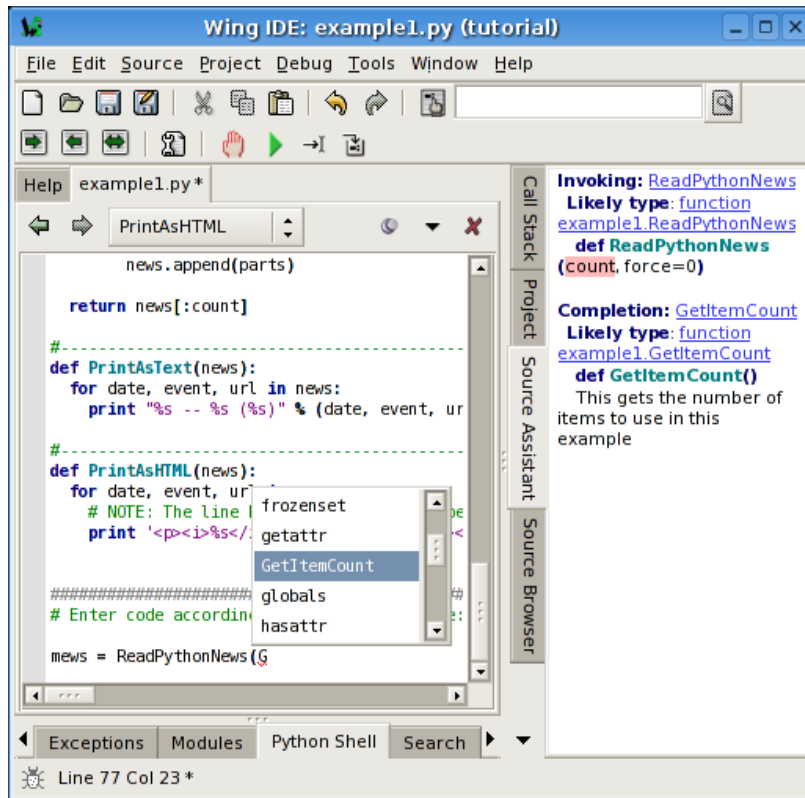
Next, press the Tab key to enter the completion of `ReadPythonNews` and enter (. You should now have this code in your editor:

```
news = ReadPythonNews(
```

I If you are used to using the Enter key for auto-completion, add it to the **Completion Keys** preference.

Duplicate substitution definition name: “note”.

Press **G** to start entering the first argument to `ReadPythonNews`. You will see the Source Assistant alters its display to highlight the first argument in the call information for `ReadPythonNews` and adds information on the argument's completion value:



The docstring for `ReadPythonNews` is temporarily hidden to conserve screen space (but this can be toggled with the `Show docstring during completion` option in the context menu obtained by right-clicking on the surface of the Source Assistant).

Now continue entering the rest of the source line so you have the following almost-complete line of source code (the trailing `)` is missing:

```
news = ReadPythonNews(GetItemCount())
```

Press `enter` a few times. Note that Wing IDE auto-indents the subsequent lines and adds red error indicators under them shortly after you stop typing. This indicates that there is a syntax error in your code:

```

Help example1.py*
PrintAsHTML

#-----
def PrintAsText(news):
    for date, event, url in news:
        print "%s -- %s (%s)" % (date, event, url)

#-----
def PrintAsHTML(news):
    for date, event, url in news:
        # NOTE: The line below contains a deliberate typo
        print '<p><i>%s</i> <a href="%s">%s</a></p>' % (data, url, event)

#####
# Enter code according to the tutorial here:

news = ReadPythonNews(GetItemCount()
~~~~~
~~~~~
~~~~~

```

Once you correct the line and complete it by typing the final `)`, the error indicators will be removed. You should now have this complete line of code in your file:

```
news = ReadPythonNews(GetItemCount())
```

The Source Assistant also updates as you move your insertion caret around the editor. For example, try moving onto `GetItemCount`. Also notice that the blue links in the Source Assistant can be used to jump to the points of definition of each symbol listed there. For variables, the link after **Symbol:** goes to the point of definition of that variable, while any links after **Likely Type:** go to the point of definition of that data type (these are the same if the symbol is a function, method, or class; we'll try the Source Assistant with more interesting code later).

To play around with these tools a bit more, enter the following two additional lines of code:

```
PrintAsText(news)
PrintAsHTML(news)
```

At this point you have a complete program that can be run in the debugger. There are many other editor features worth learning, but we'll get back to those later in this tutorial.

1.6. Tutorial: Debugging

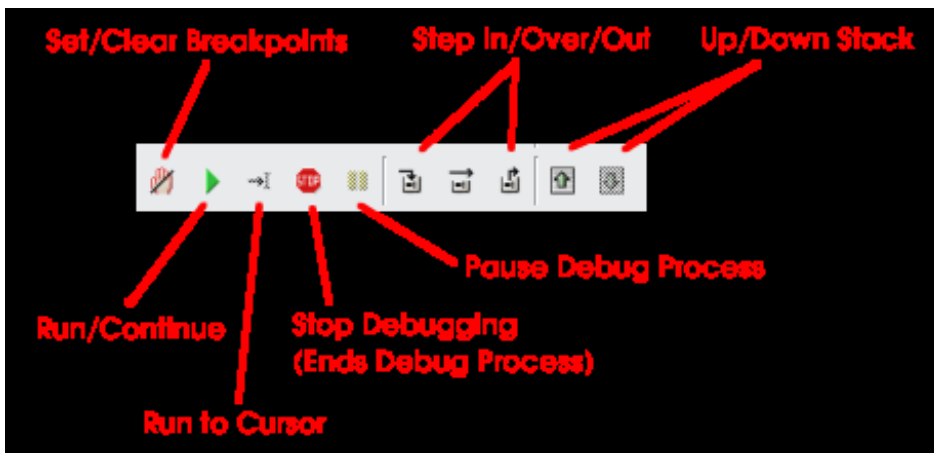
In case you haven't already figured it out, the `example1.py` program you have created connects to `python.org` via HTTP, reads and parses the Python-related news feed that is hosted there, and then prints the most recent five items as text and HTML. Don't worry if you don't have an internet connection on your machine; the script has canned data it will use when it cannot connect to `python.org`.

To start debugging, set a breakpoint on the line that reads `return 5` in the `GetItemCount` function. This can be done by clicking on the line and selecting the **Break** toolbar item, or by clicking on the dark margin to the left of the line. The breakpoint should appear as a filled red circle:

```
#-----
def GetItemCount():
    """This gets the number of items to use in this example"""
    return 5
```

Next start the debugger from the toolbar or the **Debug** menu. Wing will show the **Debug Properties** dialog with the properties that will be used during the debug run. Just ignore this for now, uncheck the **Show this dialog before each debug run** checkbox at the bottom, and press **OK**.

Wing will run to the breakpoint and stop, placing a red indicator on the line. Notice that the toolbar changes to include additional debug tools, as shown below:

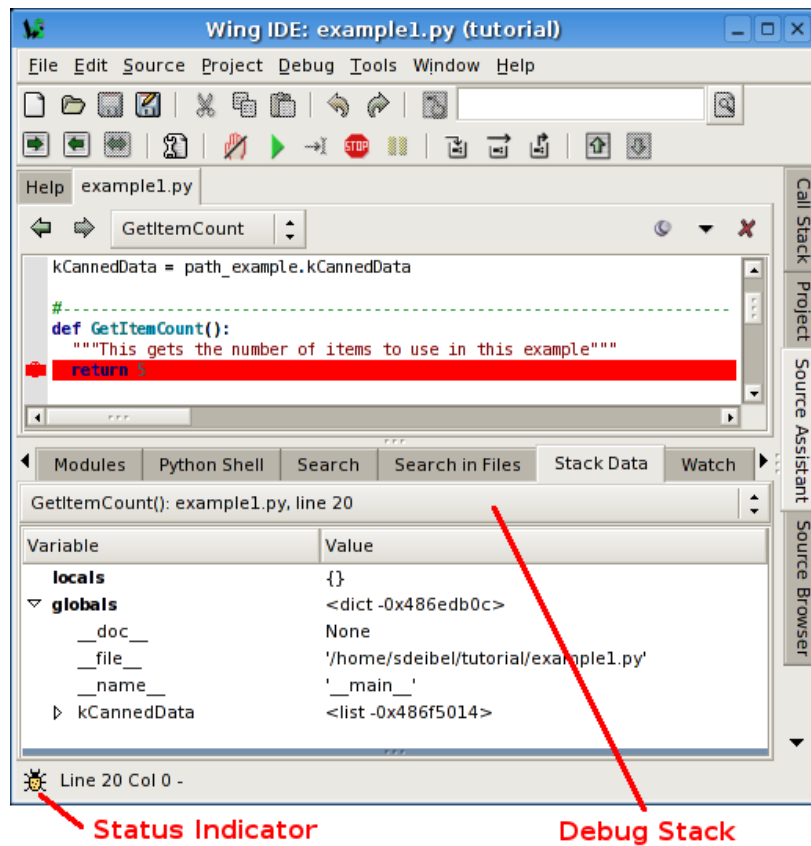


Your display may vary depending on how you have configured the **Toolbar Size** and

Toolbar Style preferences. Note that Wing displays tooltips explaining what the tools do when you mouse over them.

Now you can inspect the program state at that point with the **Stack Data** tool and by going up and down the stack from the toolbar or **Debug** menu. The stack can also be viewed as a list using the **Call Stack** tool.

Notice that the Debug status indicator in the lower left of Wing's main window changes color depending on the state of the debug process. Mouse over the indicator to see detailed status in a tooltip:

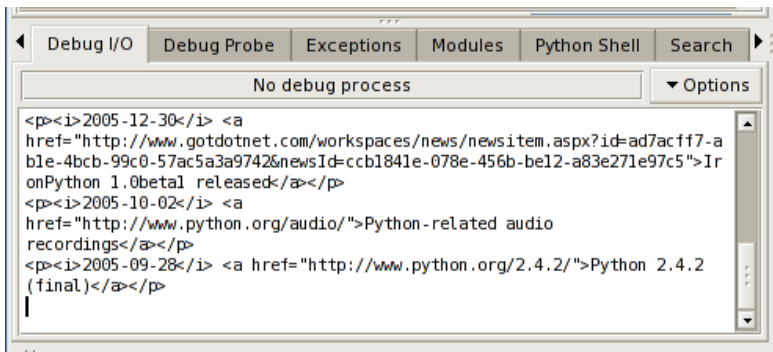


Next, try stepping out to the enclosing call to `ReadPythonNews`. In this particular context, you can achieve this in a single click with the **Step Out** toolbar icon or **Debug** menu item (two clicks on **Step Over** also work). This is a good function to step through in order to familiarize yourself with the basic debugger features covered above.

1.6.1. Tutorial: Debug I/O

Before leaving `ReadPythonNews` bring up the **Debug I/O** tool so you can watch the subsequent output from the program. This is also where keyboard input takes place in debug code that requests for it.

Once you step over the line `PrintAsHTML(news)` you should see output appear as follows:



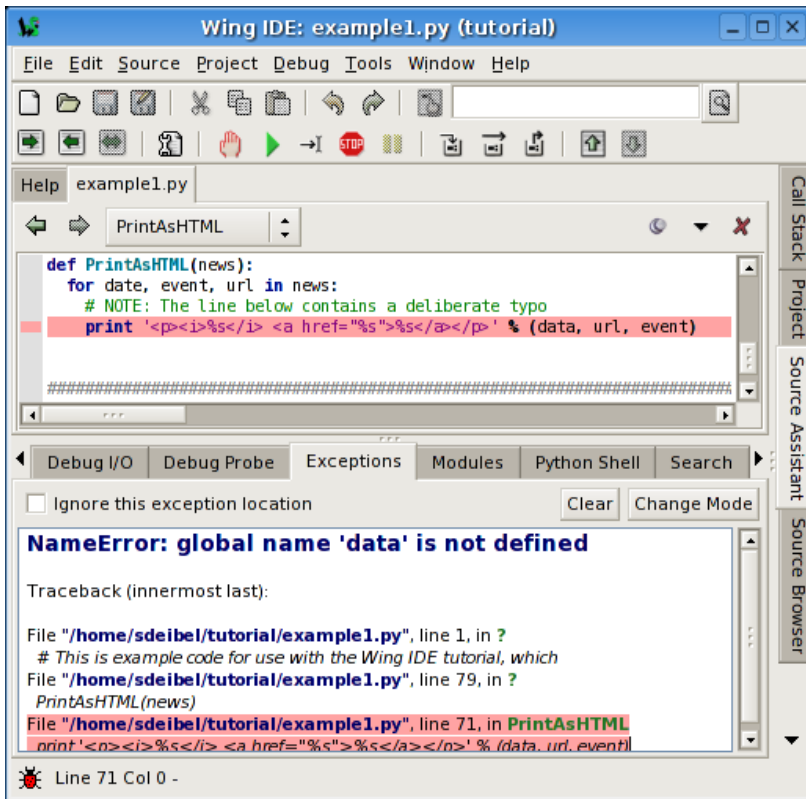
Note that you can also configure Wing to use an external console from the **Options** menu in the **Debug I/O** tool. This is useful for code that depends on details of the **Debug I/O** environment (such as cursor control with special output characters).

1.6.2. Tutorial: Debug Process Exception Reporting

Wing's debugger tries to detect whether an exception is handled (part of normal operation) or unhandled (resulting in abnormal program termination). This test is done each time an exception is raised in the debug process. If an exception looks unhandled Wing will stop immediately on it so you can inspect the live program state that led to the exception.

Try this out by continuing execution of the debug process with the **Debug** toolbar item or **Start / Continue** item in the **Debug** menu.

Wing will stop on an incorrect line of code in `PrintAsHTML` and will report the error in the **Exceptions** tool:



Notice that this tool highlights the current stack frame and that you can click on frames to navigate the exception backtrace. Whenever you are stopped on an exception, the Debugger Status indicator in the lower left of Wing's main window turns red.

Avoiding False Positives

In some cases, Wing IDE will incorrectly flag a *normal* exception as unhandled and will stop on it. This happens when the exception is handled in C/C++ extension module code. You can train Wing to ignore these with the **Ignore this exception location** checkbox from the **Exceptions** tool. Wing will remember your choice and will not stop on them again.

Alternatively, use the **Exception Reporting** preference to turn off the unhandled exception detector by selecting the **At Process Termination** option. However, this will not work well with wxPython, PyGTK, externally launched debug processes, and in some other cases. For most users, we recommend keeping the unhandled exception detector enabled.

For more information, see **Managing Exceptions**.

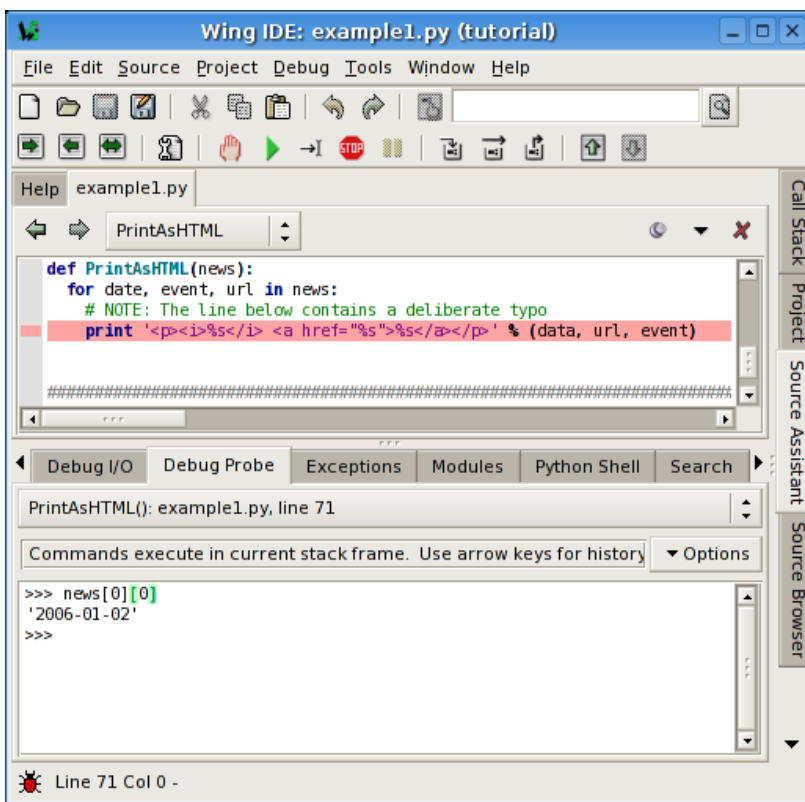
1.6.3. Tutorial: Command Line Power Debugging

Wing IDE Professional's **Debug Probe** provides a powerful way to find and fix complex bugs. This works much like the Python Shell but lets you interact directly with your paused debug program, in the context of the current stack frame:

Try it out from the point of exception reached earlier by typing this:

```
news [0] [0]
```

This will print the date of the first news item:



Next, try this:

```
news [0] [0] = '2004-06-15'
```

This is one way to change program state while debugging, which can sometimes be useful when testing out code that will go into a bug fix. Try this now:

```
PrintAsText(news)
```

This executes the function call and prints its output to the Debug Probe. Note that the Debug I/O tool is not used for input or output whenever it results from commands typed in the Debug Probe. All Debug I/O is temporarily redirected here.

Here is another possibility. Copy/paste or drag and drop this block of code to the Debug Probe:

```
def PrintAsHTML(news):
    for date, event, url in news:
        print '<p><i>%s</i> <a href="%s">%s</a></p>' % (date, url, event)
```

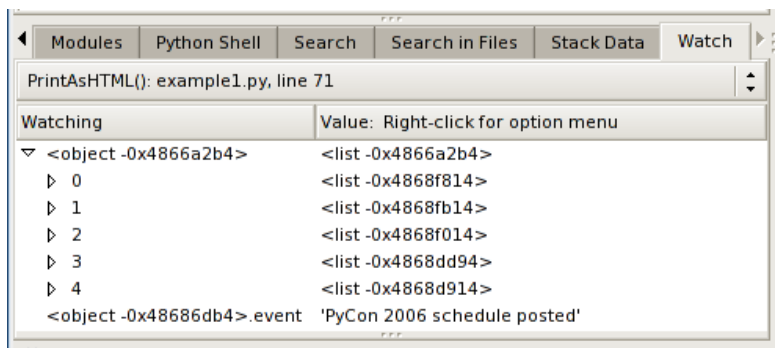
This actually replaces the buggy definition of `PrintAsHTML` that's in the `example1.py` source file, so that you can now execute it without errors as follows:

```
PrintAsHTML(news)
```

This is very useful in designing bug fixes when the fix depends on lots of program state, or happens in a context that is hard or time-consuming to reproduce in the debugger: Quick interactive trial and error replaces multiple edit/debug cycles.

1.6.4. Tutorial: Watching Debug Data

Another useful tool when working through complex bugs is Wing's ability to watch debug data values in a variety of ways. This is done with the **Watch** tool:



Tracking Values

While still at the same exception in `PrintAsHTML`, right-click on the `locals` value `news` in the **Stack Data** tool. This will present you with the following options for watching the value over time:

Watch by Symbolic Path -- This causes Wing to look for the symbolic name `news` in the current stack frame whenever you are debugging. When you select this item, the Watch panel will be displayed with one item in it that reads:

```
news          <list 0x40401eec>
```

(the object id will of course vary)

This is useful for quick access to values without digging through a long `locals` or `globals` list in the Stack Data view.

Since the watch makes sense across debug sessions, it will be remembered in the Watch tool until you clear it.

Watch by Direct Reference -- This causes Wing to keep a reference to this particular object instance (a list). It will be shown in the Watch tool as long as it exists. If the reference count for the object instance goes to zero, Wing will report `<value not found>`.

This is useful for watching a particular object while stepping through portions of code that may not hold a reference to it, or from which it is difficult to reach the referenced instance data.

Since object references aren't meaningful across debug sessions, these entries will be removed from the Watch tool as soon as the debug process terminates.

Watch by Parent Slot -- This combines the above two modes by keeping a reference to the parent of the selected value and looking up the sub-part of the value by symbolic name.

If you try this on `event` in `locals`, you are watching the value `event` within the particular `locals` dictionary, rather than `event` in the current stack frame.

This technique is more useful when working in object-oriented code where it can be used to watch particular attributes within a specific object instance.

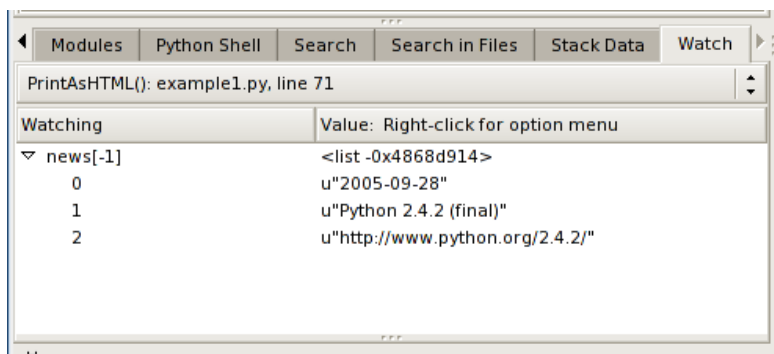
Since the parent is tracked by object reference, these entries are also removed from the Watch tool as soon as the debug process ends its life.

Watch by Module Slot -- This option can be used to watch values within modules, by looking up the module by name in `sys.modules` and tracking the value symbolically. It is only available when right-clicking on values in the Modules tool, which will be discussed later.

Since these are meaningful across debug sessions, values watched by module will be retained in the Watch tool until they are removed by the user.

Watching Expressions

It is also possible to watch the value of any Python expression in the Watch panel. Just click on an empty part of the **Watching** column and type in the expression you wish to watch:



Try this now, while still stopped at the exception in `PrintAsHTML`, by entering this:

```
news[-1]
```

This will show the last item of `news` as long as there is one, or `<undefined>` or `<error evaluating>` if the value cannot be determined.

Expressions are remembered in the Watch tool across debug sessions, until they are removed by the user.

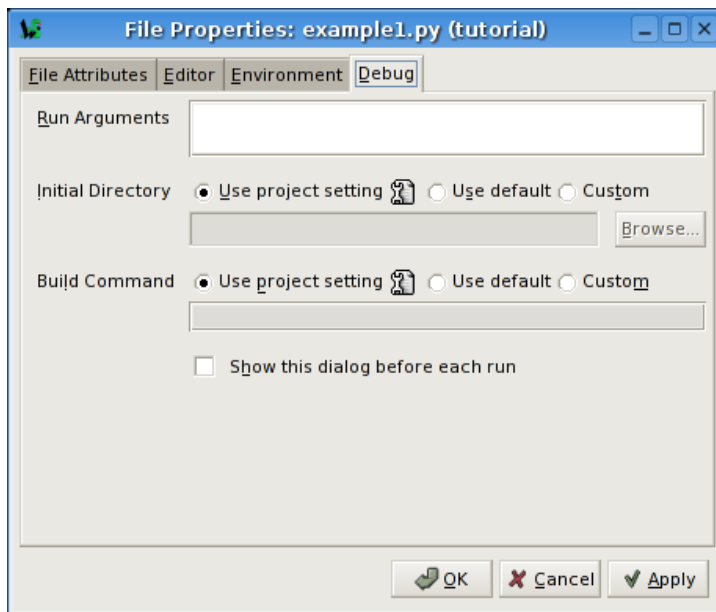
1.6.5. Tutorial: Other Debugger Features

Before moving on to the rest of the IDE's features, here are a few highlights of the debugger's other capabilities that are worth knowing about from the start:

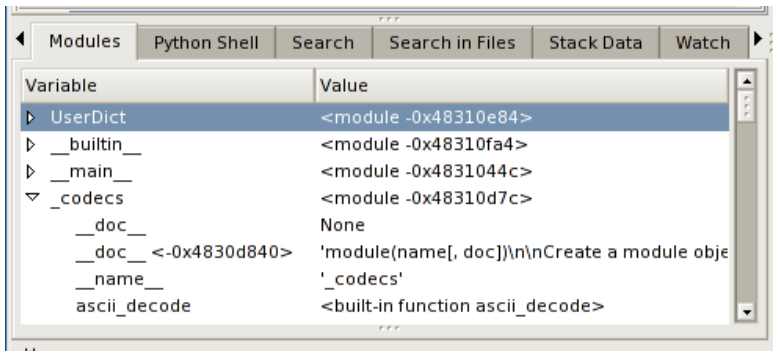
- **Main Debug File** -- You can specify one file in your project as the main entry point for debugging. When this is set, debugging will always start there unless you use the **Debug Current File** item in the **Debug** menu. To set a main debug file, use **Set Current as Main Debug File** in the **Debug** menu or by right-clicking on the file in the project and selecting **Set As Main Debug File** from the context menu that appears.

When set, the main debug file can be cleared with the **Clear Main Debug File** item in the **Debug** menu. Once cleared, debugging always starts in the current editor file. Which mode you use depends on the nature of your project.

- **File Properties** -- Each file in your project can override or modify your project-wide debug properties. This is useful in projects with multiple debug entry points. File properties can also be used to specify command line arguments for debugging. They are accessed from the **Current File Properties** item in the **Source** menu or by using **File Properties** in the editor or project context menus:



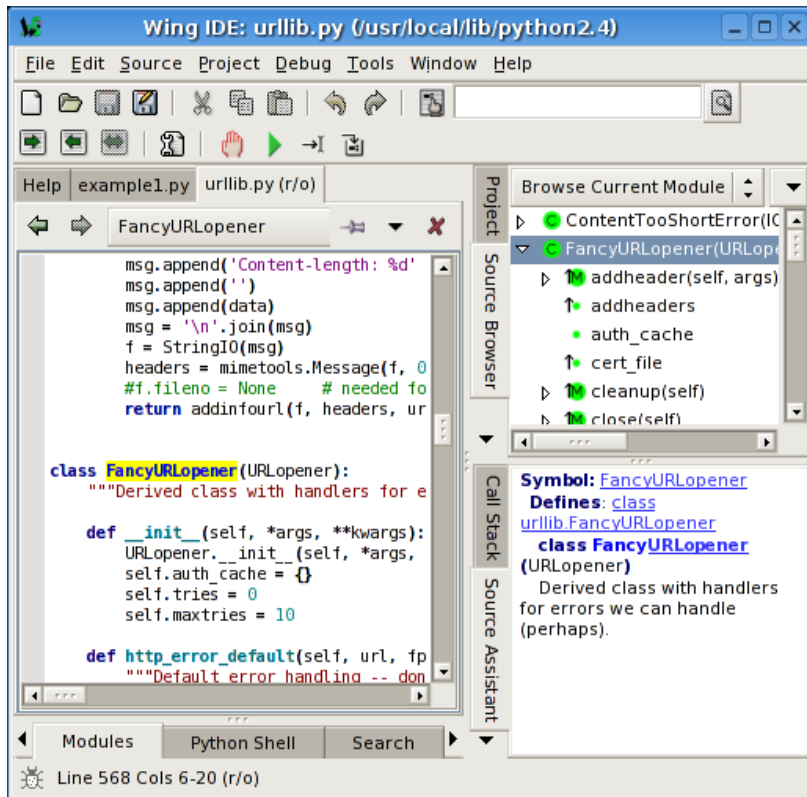
- **Modules Data View** -- By default, Wing filters out modules and some other data types from the values shown in the Stack Data tool. In some cases, it is useful to view values stored in modules. This can be done with the **Modules** tool, which is simply a list of all modules found in `sys.modules`:



- **Conditional Breakpoints** -- Use the Debug menu's **Breakpoint Options** group or right click on the breakpoints margin to set a conditional breakpoint. These can be very useful if you need to stop in code before an error occurs, so that you can step through the code that leads up to the error. Conditionals can be any Python expression, but beware of expressions that alter your program state as a side-effect. Note that Wing will always stop on a conditional breakpoint when an exception is raised when the conditional expression is evaluated.
- **Breakpoint Manager** -- The **Breakpoints** tool accessed from the **Tools** menu shows a list of all defined breakpoints and allows enabling/disabling, editing the breakpoint conditional, setting an ignore count, and inspecting the number of times a breakpoint has been reached when a debug process is active.
- **Remote Debugging** -- Wing can debug processes that are running under a web server, as part of Zope or Plone, or that get launched from the command line and not from Wing. This is beyond the scope of this tutorial, and is described in **Debugging Externally Launched Code** and in the **Zope**, **Plone**, and **mod_python** quick start guides.

1.7. Tutorial: Source Browser

Wing IDE Professional includes a **Source Browser** that can be used to inspect and navigate the module and class structure of your source code.



By default, the browser will display classes, methods, attributes, functions, and variables defined in the currently displayed source editor (if any). The popup menu at the top left of the source browser can be used to alter the display to include all classes or all modules in the project. The Options menu in the top right allows filtering by origin, accessibility, and type of source symbols. The Options menu also allows sorting the view alphabetically, by type, or in the order that symbols occur in the source file.

As with the Project display, double clicking or right-clicking on items in the Source Browser opens them into an editor. The **Follow Selection** option appears here as well (in the Options menu) and when enabled opens transient editors in order to show the points of definition for symbols selected on the Source Browser by single-clicking or via keyboard navigation.

The **Source Assistant** is integrated with the source browser, and will update its content as you move around the source browser tree.

1.8. Tutorial: Searching

Wing IDE provides several different interfaces for searching your code. Which you use depends on your task.

Toolbar Search

A quick way to search through the current editor is to enter your search string in the area provided in the toolbar:



If you enter only lower case the search will be case-insensitive. Entering one or more upper-case letter causes the search to become case-sensitive.

Try this now in `example1.py`: Type `GetItem` in the toolbar search area and Wing will immediately, starting with the first letter typed, search for matching text in the editor. Notice that if you press the **Enter** key, Wing will move on to the next match, wrapping around to the top of the file if necessary.

Toolbar-based searches always go forward (downward) in the file from the current cursor position.

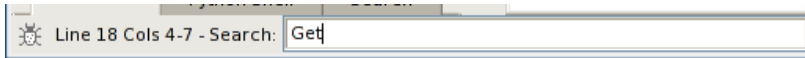
Keyboard-driven Search

If you prefer to search without your fingers leaving the keyboard, use the key bindings given next to the **Mini-search** items in the **Edit** menu.

From here, you can initiate searching forward and backward in the current editor, optionally using the current selection in the editor as the search string. You can also initiate replace operations.

Try this in the `example1.py` file: If using the default editor mode, press the **Ctrl-U**. If you are using emacs mode, press **Ctrl-S**. For others, refer to the **Mini-search** group in the **Edit** menu.

This will display an entry area at the bottom of the IDE window and will place focus there:



Continue by typing **G**, then **e**, then **t**. Notice how Wing searches incrementally with each keypress. This lets you type only as much as you need to find the source code you are looking for.

While the mini-search area is still active, try pressing the same key combination you used to display it again (**Ctrl-U** or **Ctrl-S** in emacs mode) and Wing will search for the next matching occurrence. Note that if no match is found **Failed Search** will be displayed. However, pressing the mini search key combination again will wrap around and start searching again at the top of the file.

As in the toolbar search, typing lower case letters results in case-insensitive search, and using one or more upper case letters results in case-sensitive search.

Search direction can be changed during searching by pressing the key bindings assigned to forward and backward mini-search. You can exit from the search by pressing the **Esc** key or **Ctrl-G** in emacs mode.

Keyboard-driven mini-replace works similarly, except that you will be presented with two entry areas, one for your search string and one for the replace string. Use **Query/Replace** to be prompted for **Y** and **N** for each replace location, and **Replace String** to replace all matches globally in the file.

Search Tool

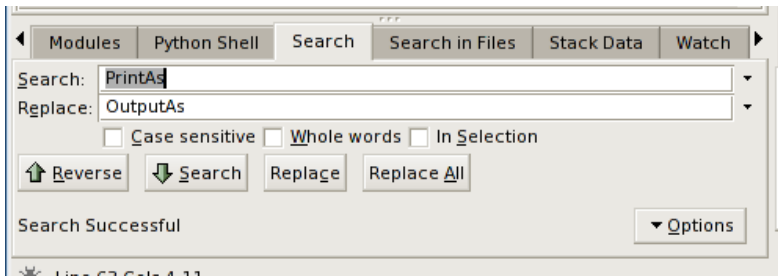
The **Search** tool provides a familiar GUI-based search and replace tool for operating on the current editor. Key bindings for operations on this tool are given in the **Search and Replace** group in the **Edit** menu.

Searches may span the whole file or be constrained to the current selection, can be case sensitive or insensitive, and may optionally be constrained to matching only whole words.

By default, searching is incremental while you type your search string. To disable this, uncheck **Incremental** in the **Options** menu.

Replacing

When the **Show Replace** item in **Options** is activated, Wing will show an area for entering a replace string and adds **Replace** and **Replace All** buttons to the **Search** tool:



Try replacing `example1.py` with search string `PrintAs` and replace string `OutputAs`.

Select the first result match and then **Replace** repeatedly. One search match will be replaced at a time. Search will occur again after each replace automatically unless you turn off the **Find After Replace** option. Changes can be undone in the editor, one at a time. Do this now to avoid saving this replace operation.

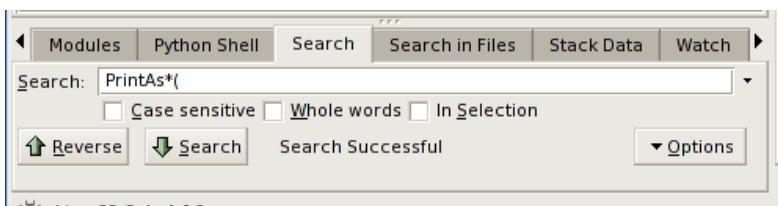
Next, try **Replace All** instead. Wing will simply replace all occurrences in the file at the same time. When this is done, a single undo in the editor will cancel the entire replace operation.

Wildcard Searching

By default, Wing searches for straight text matches on the strings you type. Wildcard and regular expression searching are also available in the **Options** menu.

The easier one of these to learn is wildcard searching, which allows you to specify a search string that contains `*`, `?`, or ranges of characters specified within `[` and `]`. This is the same syntax supported by the Python `glob` module and is described in more detail in the **Search Tool** manual page.

Try a wildcard search now by selecting **Wild Card** from the **Options** menu and making sure `example1.py` is your current editor. Set the search string to `PrintAs*(`. This should display find matches, all occurrences of the string `PrintAs`, followed by zero or more characters, followed by `(`:



Also try searching on `PrintAs*[A-Z](` (with the `Case Sensitive` search option turned on. This matches all strings starting with `PrintAs` followed by zero or more characters, followed by any capital letter, followed by `(`.

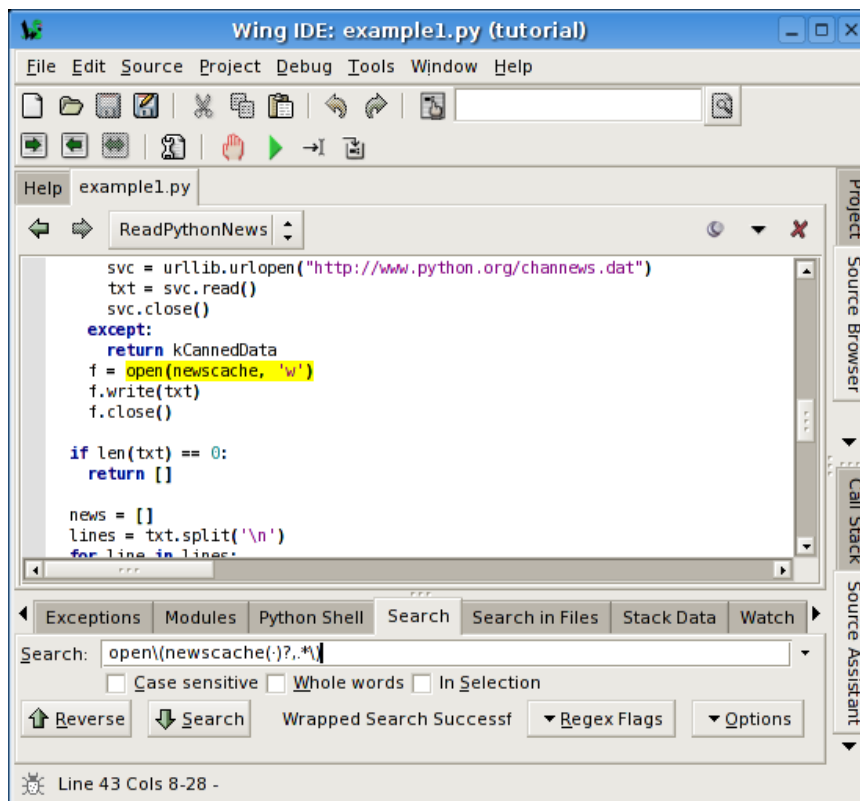
Finally, try `PrintAsT???`, which will match any string starting with `PrintAsT` followed by any three characters (`?` matches any single character).

Wild card searching can be very useful for finding related source symbols all at once.

Regular Expression Search

Regular expressions can also be used for searching. These are most useful for complicated search tasks, such as finding all calls to a particular function that occur as part of an assignment statement.

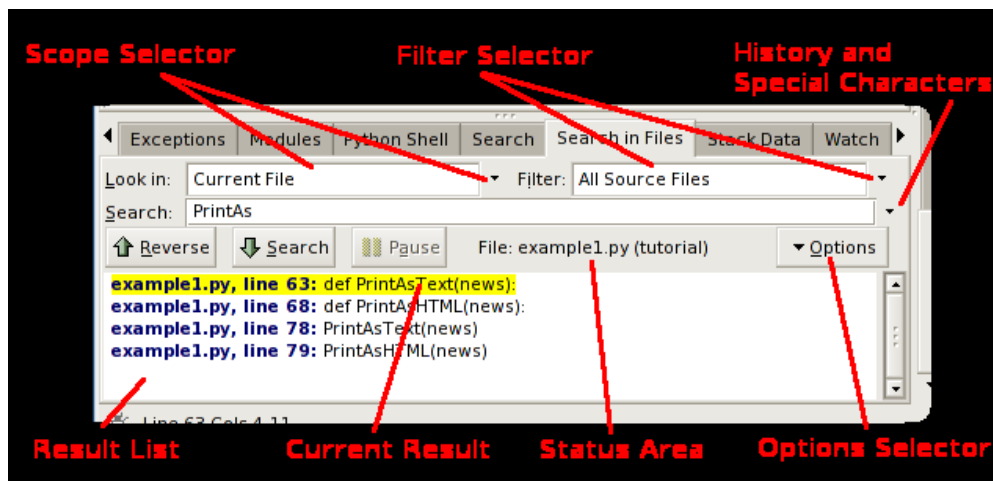
For example, `open\(newscache()?, .*\)` matches only calls to the function `open` where the first argument is named `newscache` and there are at least two parameters. If you try this with `example1.py`, you should get exactly one search match:



The details of regular expression syntax and usage can be very complicated, so this tutorial does not cover them. For that, see the [Regular Expression Syntax](#) documentation in the Python manual.

Search in Files Tool

The **Search in Files** tool is the most powerful search option available in Wing IDE. It supports multi-file batch search of the disk, project, open editors, or other sets of files. It can also search using wildcards and can do regular expression based search/replace.



Before worrying about the details, try a simple batch search on the `example1.py` file. Select **Current File** from the **Look in** selector on the search manager (these are the defaults). Then enter `PrintAs` into the search area.

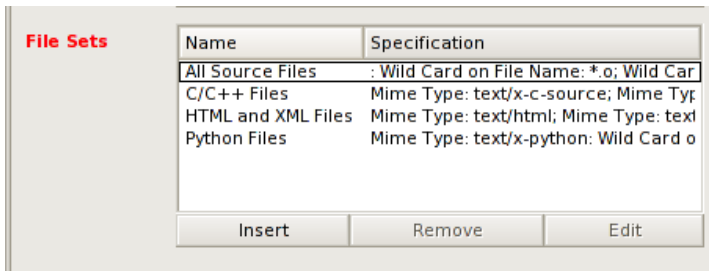
Wing will start searching immediately, restarting the search whenever you alter the search string or make other changes that affect the result set. When you are done, you should see results like those shown in the screen shot above. Click on the first result line to select it. This will also display `example1.py` with the corresponding search match highlighted.

You can use the forward/backward arrows in the Search in Files manager to traverse your results.

File Sets

Next, change the **Look in** selector to **All Files in Project** and change your search string to **HTML**. This works the same way as searching a single file, but lists the results for all files in your project. You can also search all currently open files in this way.

In many cases, searching is better constrained to a subset of files in your projects. For example, only Python files. This can be done with by selecting **Python Files** in the **Filter** selector. You can also define other file sets using the **Create/Edit File Sets...** item in the Filter Selector. This will display the File Sets preference:



Each file set has a name and a list of include and exclude specifications. Each of these specifications can be applied to the file name, directory name, or the file's MIME type. A simple example would be to specify `*.pas` wildcard for matching Pascal files by name, or using the `text/html` mime type for all HTML files.

Searching Disk

Wing can also search directly on disk. Try this by typing a directory path in the **Look in** area. Assuming you haven't changed the search string, this should search for **HTML** in all text files in that directory.

Disk search can also be recursive, in which case Wing searches all sub-directories as well. This is done by selecting **Recursive Directory Search** in the Scope Selector.

You can alter the format of the result list with the **Show Line Numbers** item and **Result File Name** group in the Options Selector. The Option Selector contains various other search options as well.

Multi-File Replace

When working with multiple files in the result set, Wing will by default open each changed file into an editor, whether or not it is already open. This allows you to undo changes by not saving files or by issuing **Undo** within each editor.

An alternate replace mode is also available from the Options menu. If you check the **Replace Operates on Disk** item, Wing will change files directly on disk instead of opening editors into the IDE. This can be much faster but is not recommended unless you have a revision control system that can get you out of hot water when mistakes are made.

Note that even when operating directly on disk, Wing will replace changes in already-open editors only within the IDE. This avoids creating two versions of a file if there are already edits in the IDE's copy. We recommend closing all editors when working in **Replace Operates on Disk** mode, or select **Save All** from the file menu immediately after each replace operation. This avoids losing parts of a replace, which might lead to inconsistent application of the replace operation to the files in your source base.

1.9. Tutorial: Source Assistant with Classes

The earlier examples of the Source Assistant in action within `example1.py` didn't show some of its features because there are no classes in that file. Let's revisit it now with `example2.py` from your `tutorial` directory. Move the insertion cursor to the definition of the `end_pre` method in `MyHTMLParser` and place it on the word `end_pre`. You should see the following in the Source Assistant:

```
Symbol: end_pre
Defines: method example2.MyHTMLParser.end_pre
def end_pre(self)
Overrides: method htmllib.HTMLParser.end_pre
def end_pre(self)
Overridden to count number of completed <pre></pre> blocks
```

The Source Assistant also displays information about inherited classes when clicking on class names. For example, clicking on `self.obj` in the constructor (`__init__()`) of `AnotherClass` will display this:

```
Symbol: self.obj
Likely type: instance of example2.MyHTMLParser
class MyHTMLParser(htmllib.HTMLParser)
An example that helps to illustrate some of Wing IDE's features
```

! **Helping Wing's Analyzer:** Notice the statement that reads `isinstance(obj, MyHTMLParser)` at the top of `AnotherClass.__init__()` in `example2.py`: This tells Wing's source analysis engine the type of `obj`. Python's design makes exhaustive analysis of object-oriented code difficult, but since type information is propagated by inference to other values (such as `self.obj` in this case), fairly few `isinstance` hints can go a long way to improving Wing's ability to show useful information in the auto-completer, Source Assistant, and other tools.

Since Wing's analysis engine ignores conditionals in code, the following can be used in a case where the `isinstance` would add a circular import bug to program execution:

```
if 0:
    import mymodule
    isinstance(myvalue, mymodule.MyClass)
```

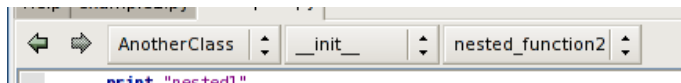
For extension modules written in C or C++, Wing can recognize and parse Python interface files given the name of the extension module plus `.pi`. For example, for an extension module imported as `mymodule`, a file named `mymodule.pi` can be created with Python skeleton code that for the functions, attributes, classes, and methods that are defined by the extension module. For examples of these, see the directory `resources/builtin-pi-files` inside your Wing IDE installation.

1.10. Tutorial: Other IDE Features

There are a number of other features available in the IDE that are worth noting:

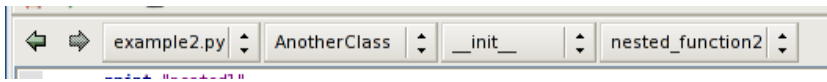
Source Index -- The top of the editor area displays a series of popup menus that act as an index into Python source files. Select from them to navigate around your source file.

Try this out by opening `example2.py` from your `tutorial` directory. If you place the cursor on the line that reads `print "nested2"`, you should see the following in the source index area:




Each subsequent menu lists the symbols available within the preceding nested context.

If you have turned off **Show Notebook Tabs** in the Editor Options Menu, the file selector menu will be prepended as follows:



Goto-Definition -- There are a number of ways to navigate to the point of definition of symbols in your source code. One is to right-click on the symbol and select **Goto Definition**. Another is to move the insertion cursor to the symbol and select **Goto Selected Symbol Defn** from the **Source Menu** (or press F4). The Source Assistant also contains links to points of definition.

Try this from `example2.py` with some of the symbols imported from `htmllib`, such as `HTMLParser` in the class definition for `MyHTMLParser`. Remember that the file `htmllib.py` is opened in non-sticky mode and will auto-close unless you toggle the stick pin icon to 

or edit the file.

Duplicate substitution definition name: “stickpin-stuck”.

Goto-Line -- Navigate quickly to a numbered source line with the **Goto Line** item in the **Edit** menu. In emacs mode, the line number is typed into the data entry area that appears at the bottom of the window. Press **Enter** to complete the action.

Keyboard-driven File Open -- Try the **Open from Keyboard** item in the **File** menu: This displays an interactive file selector at the bottom of the IDE window that can be much quicker for opening files than using the standard file selection dialog and allows file selection without moving your hands from the keyboard. Use **Esc** to cancel or **Enter** to select a file and the arrow keys to browse around the auto-completion list that it presents as you type.

Auto-Indentation -- Wing auto-indents lines as you type according to its static analysis of your code. This can be disabled with the **Auto-Indent** preference.

Another way in which Wing uses code analysis is in auto-indentation as you type, and for altering indentation or wrapping of code. For example, when you select a block of code and press the tab key, the entire block is re-indented according to the correct position of its first line relative to the preceding non-blank line of code. The **Justify Text** option in the **Source** menu also uses the source analyser to constrain re-wrapping to a single logical line of Python code.

Block Indentation -- The **Tab** key is defined to indent the current line or blocks of lines,

rather than entering a tab character (which can be done with **Ctrl-Tab**). The **Tab Key Action** preference can be used to customize how the tab key behaves.

One or more selected lines can be increased or reduced in indentation from the Indentation toolbar group, which contains the following icons for this purpose:



Single lines or whole blocks can also be indented automatically to their appropriate position, as determined by analysis of the preceding line. If a range of lines is selected, the whole block is indented or outdented without changing the relative indents within the block. This is done from the following toolbar icon:



Note that the indentation features are also available in the **Source** menu, where their key bindings are listed.

Block Commenting -- Units of code can be commented out or un-commented quickly from the **Source** menu.

Brace Matching -- Wing highlights brace matching as you type unless disabled from the **Auto Brace Match** preference. The **Match Braces** item in the **Source** menu causes Wing to select all the code that is contained in the nearest matching braces found from the current insertion point on the editor. Repeated application of the command will traverse outward and forward in the file.

Text Reformatting -- Code can be re-wrapped with the **Justify Text** item in the **Source** menu. This will limit wrapping to a single logical line of code, so it can be used for wrapping an argument list or long list or tuple without altering surrounding code.

Converting Indentation Styles -- Wing's **Indentation** tool can be used to analyze and convert the style of indentation found in source files. See **Indentation Manager** for details.

Revision Control -- Wing provides integrations with the **Subversion**, **CVS**, and **Perforce** revision control systems. These are enabled from the **Extensions** tab in **Project Properties**.

Templates / Code Snippets -- The **Templates** tool in the **Tools** menu can be used to

define and use code snippets for commonly repeated motifs, such as class or def skeletons or documentation templates. For details see the **templating documentation**.

Bookmarks -- The **Bookmarks** tool in the **Tools** menu and bookmarking commands in the **Source** menu can be used to define and jump to marked locations in the editor. In Python files, these bookmarks are defined relative to the named scope in the file so they move around as the file is edited. See **bookmark documentation** for details.

Folding -- Unless turned off with the **Enable Folding** preference, Wing allows folding of editor code to hide areas that are not currently of interest. The folding is visual only so selecting across a folding and copying will copy the text including its hidden portions. Folding can be useful to get a quick summary of the contents of a source file. Refer to the **Folding** manual page for details.

Macros -- Keyboard/command macros are available. See the **Keyboard Macros** section of the manual for details.

1.11. Tutorial: Further Reading

Congratulations! You've finished the tutorial. As you work with Wing IDE on your own software development project, the following resources may be useful:

- [Wing IDE Support Website](#)
- **Wing IDE Reference Manual**
- **OS X Quickstart**
- **Zope Quickstart**
- **Plone Quickstart**
- **wxPython Quickstart**
- **PyGTK Quickstart**
- **PyQt Quickstart**
- **mod_python Quickstart**
- **PyGame Quickstart**

Migrating from Wing IDE 1.x

Moving to Wing IDE 2.x from Wing IDE 1.x should be relatively painless. The first time you start Wing IDE 2.x, it will automatically convert your preferences from Wing IDE 1.x and place them into your **User Settings Directory** (note location of this directory has changed).

- **Licensing**

Wing IDE 2.x runs on a new license manager that cannot use Wing IDE 1.1 licenses. Trial licenses are now obtained directly from the product, and all licenses are activated (bound to a particular host) before they can be used. More information is available in **Licenses**

Wing IDE 1.1 licenses can be upgraded in our [online store](#) -- for free if purchased on or after August 28th, 2003, or for half price if purchased before that date.

- **Converting Projects**

Wing IDE 1.x project files will be converted as they are opened and marked untitled so they can be saved under a new name. You should not overwrite your old project files as long as you still plan to use Wing IDE 1.x. Wing IDE 2.x project files cannot be read by Wing IDE 1.x.

- **Customizing the User Interface**

Wing IDE 2.0 introduced an almost completely redesigned user interface. While the basic “feel” of the application from the keyboard should be similar, the layout of the interface is quite different and offers many more customization options. See the **Customization** chapter of the manual to learn how to reconfigure your interface.

For those that prefer the old multi-window approach found in Wing IDE 1.1, see the **Windowing Policy** preference. Also, even in combined window mode you can create as

many document windows as you wish and move tools and editors out to separate windows or among existing windows. Your configuration will be remembered in your project file.

- **New Features**

These are the major new features introduced by Wing IDE 2.x:

New User Interface -- Redesigned for better work-flow and flexibility, the new interface (based on Gtk2) also looks much better, and is highly customizable.

Source Assistant -- This tool adds context-appropriate display of call signature, docstring, probable data type, and much more. This new feature joins auto-completion, source index, goto-definition, and the source browser in Wing's lineup of powerful code intelligence tools.

Redesigned Search Manager -- This now supports multi-file search and replace, wild cards, and regular expressions. The new search manager is also useful in designing and testing regular expressions.

Integrated Help -- All Wing IDE documentation is now available directly within the IDE from the Help menu and in many cases via tool tips displayed when the mouse hovers over areas of the user interface.

Integrated Debug I/O -- Debug process I/O now appears in the Debug I/O tool within the IDE, although using an external console is still an option.

German Localization -- German versions of the user interface and documentation are now available.

Modules Data View -- Browse program data starting at `sys.modules`.

Watch Manager -- This combines the old expression evaluator and value tracking feature into one powerful tool. Click on the tool to add expressions to evaluate, or track values by object reference or symbolic name by right clicking on any of the debug data views.

Breakpoints Tool -- For managing your breakpoints.

Templating / Code Snippets -- Define and use common coding motifs.

Bookmarks -- Define named dynamically tracked bookmarks.

Redesigned Source Context Menus -- These appear at the top of the editor area as a series of menus, one for each nested scope at the current insertion point, rather than as a single huge heirarchical menu.

Optional Editor Tabs -- Select among files using notebooks tabs or a popup menu at the top of the editor.

Integrated Bug Reporting and Feedback -- Use the Help menu items to report bugs or submit feedback directly from the product.

New License Manager -- Provides easier trial licensing and installation of purchased licenses, and adds license activation to help companies track license usage and to reduce the impact of casual license sharing.

Message Manager -- Keeps a log of status messages by sub-system.

Why Use Wing IDE?

Wing IDE is a powerful software development environment for Python programmers. By cutting down on coding and debugging time, Wing can help you build quality code more rapidly.

“The best Python IDE currently available.”

-- *Stephen Scherer, Ed.D., Jan 2004*

“A real power tool to use for the development and debugging of complex Python applications”

-- *InformIT, Sep 2001*

-
- **Faster, more accurate coding** -- Wing presents you with context-appropriate code completion options and documentation, offers quick navigation to point of definition, and flags syntactical errors as you type your code. A plethora of keyboard-driven search and editing features, including Vim, Emacs, Visual Studio, and Brief keyboard bindings, keep plenty of coding power at your fingertips.
 - **Speedier debugging** -- Wing finds bugs fast by detecting and stopping immediately on unexpected exceptions, letting you step through and inspect your code in the context of the problem. Conditional breakpoints, symbolic and object reference value tracking, and command line interaction with your paused debug program speed the process of isolating a bug and designing a fix for it. Flexible launch options and remote debugging allows working with code in context, even if running under a web server, Zope or Plone, embedded as a scripting language, or launched from the command line.
 - **Quicker code learning** -- Wing lets you understand unfamiliar code quickly, using its powerful search capabilities, source code browser, editor navigation menus, goto-definition, and the debugger’s ability to watch programs in action.

More product information is available on our website at www.wingware.com.